

# Configuration and Development

## BENEFITS

**Install the solution in minutes, without disrupting business processes.** Microsoft Dynamics GP offers step-by-step guidance for defining the features and default database that should be enabled for your system. Faster implementation processes can help ensure that your system is up and running quickly, with minimal disruption to “business as usual.”

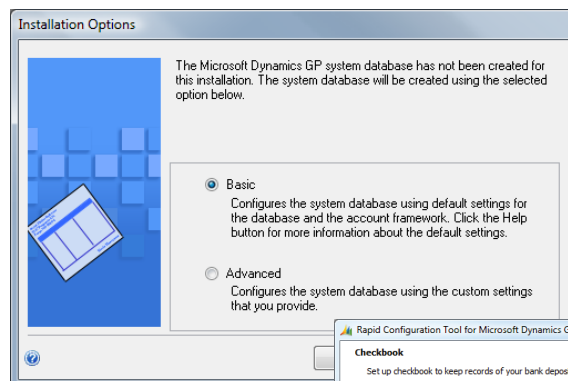
**Quickly configure the system to meet specific business needs.** Set up core Microsoft Dynamics GP modules using built-in, customizable Microsoft® Office Excel® templates and an intuitive interface. Users can also build (and save) custom configuration templates that meet highly specific business and industry needs.

**Simplify data migration from legacy applications, including Intuit QuickBooks.** Make the move to Microsoft Dynamics GP efficiently with capabilities for migrating and updating data from legacy systems. With the Rapid Migration tool, Intuit QuickBooks users can selectively migrate vital business information—including master records such as customers, employees, vendors, items, and accounts, and open transactions such as payables, receivables, purchase orders, and more—as well as edit and update master records during the migration process.

**Ensure predictable, cost-effective implementations.** Rapid Implementation tools work with Microsoft Dynamics Sure Step, an easy-to-use methodology that includes tools, proven best practices, and customizable templates that help ensure reliable implementation, migration, and upgrades.

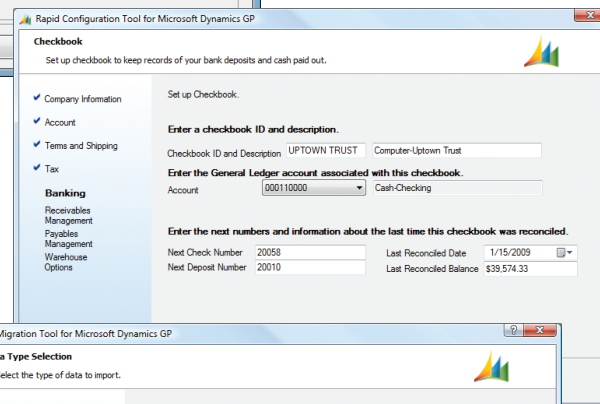
## Rapid Implementation Tools for Microsoft Dynamics GP

Reduced deployment time and fuel partner productivity. Microsoft Dynamics® GP offers tools that help people install the system in minutes, quickly set up core functionality, and efficiently migrate and update data from legacy systems.

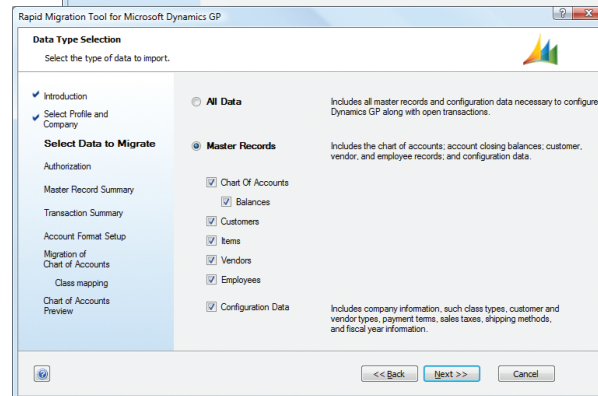


*BY SELECTING THE BASIC INSTALL OPTION, default database settings are automatically populated, simplifying installation efforts.*

*QUICKLY SET UP CORE FUNCTIONALITY with customizable industry templates.*



*MIGRATE CRITICAL BUSINESS DATA, including master records, open transactions, and configuration settings.*



## FEATURES

## RAPID IMPLEMENTATION TOOLS

<p><b>Rapid Installation</b></p>	<ul style="list-style-type: none"> <li>• Ensure fast, straightforward installation with the Basic option in Microsoft Dynamics GP Utilities. Installation includes default settings for the database and account framework, offers simplified set-up screens, and automatically populates settings to help eliminate confusion.</li> </ul>
<p><b>Rapid Configuration Tool</b></p>	<ul style="list-style-type: none"> <li>• A user-friendly tool helps ensure fast configuration for core Microsoft Dynamics GP modules such as System Manager, General Ledger, Bank Reconciliation, Receivables Management, Payables Management, Fixed Assets, Payroll, Sales Order Processing, Purchase Order Processing, and Inventory Management.</li> <li>• Partners and IT staff can work with 13 built-in, customizable Office Excel templates that include all configuration settings and data (such as fiscal years, and payment terms) for the core modules, as well as create new templates. All templates can be edited and customized during the implementation process, and then directly imported into the Rapid Configuration tool during the final phase of the implementation.</li> <li>• “Power users” can work with an intuitive user interface to select an industry-specific or partner configuration template, and then add, edit, or delete specific data and settings.</li> </ul>
<p><b>Rapid Migration Tool</b></p>	<ul style="list-style-type: none"> <li>• An easy-to-use migration tool simplifies the move to Microsoft Dynamics GP from QuickBooks, specifically 2004–2008 versions of QuickBooks Basic, Pro, Premier, and Enterprise. Users can point to an existing QuickBooks file and mark the specific information they want to migrate to Microsoft Dynamics GP.</li> <li>• The Rapid Migration tool quickly migrates the following data:             <ul style="list-style-type: none"> <li>• <i>Master Records</i>: Accounts (including opening balances), Customers, Employees, Vendors, Items</li> <li>• <i>Open Transactions</i>: Sales Orders, Purchase Orders, Payables, Receivables, Inventory (including inventory levels)</li> <li>• <i>Configuration Settings</i>: Classes, Company Address, Customer Type, Payment Terms, Sales Tax, Vendor Type, Fiscal Year, Shipping Methods</li> </ul> <p>Templates can be exported from existing company databases, and then saved and re-retrieved for future implementations.</p> </li> <li>• Master records can be edited during the migration process so that outdated or inaccurate data is avoided. Once the data is exported from QuickBooks, the master records can be sent to Office Excel, giving users the option to change data before importing it into Microsoft Dynamics GP.</li> <li>• The tool validates and logs all records that are exported from QuickBooks and imported into Microsoft Dynamics GP. Users also can easily reconcile any errors that may have occurred during the migration process.</li> <li>• QuickBooks customers can create a new Chart of Accounts, based on the account number used with QuickBooks, by splitting the previous number into multiple segments. QuickBooks Classes can also be added as another segment to the new Microsoft Dynamics GP chart of accounts.</li> </ul>

For more information about Microsoft Dynamics GP, visit [www.microsoft.com/dynamics/gp](http://www.microsoft.com/dynamics/gp).

